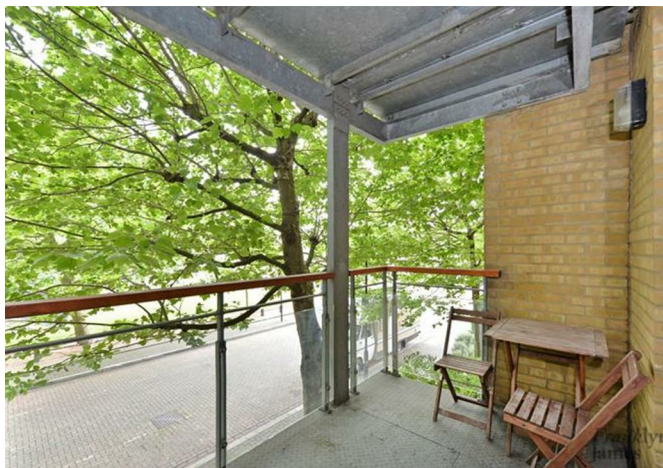


Franklyn James



1 Maritime Quay, E14 3QE
£2,450 Per Calendar Month



1 Maritime Quay, E14 3QE

£2,450 Per Calendar Month

Refurbished to include new flooring, freshly painted and brand new kitchen. Enjoy stunning views of the river Thames this summer from the large terrace of this attractive apartment in the much sought-after Maritime Quay. Accommodation comprises main entrance with lift, entrance hall, open-plan reception/dining room with access onto terrace, separate kitchen, master bedroom with access onto terrace and en suite shower room, second bedroom and main bathroom.

Located on a private road in the popular Maritime Quay development, the property is perfectly positioned for the Thames Clipper service and Island Gardens DLR station which both provide great transport links into the City and Canary Wharf.

Call now to arrange your viewing.

Description

- Two bedrooms
- Two bathrooms
- New kitchen
- New flooring and freshly painted
- Large balcony with river views
- Available now



Furnished

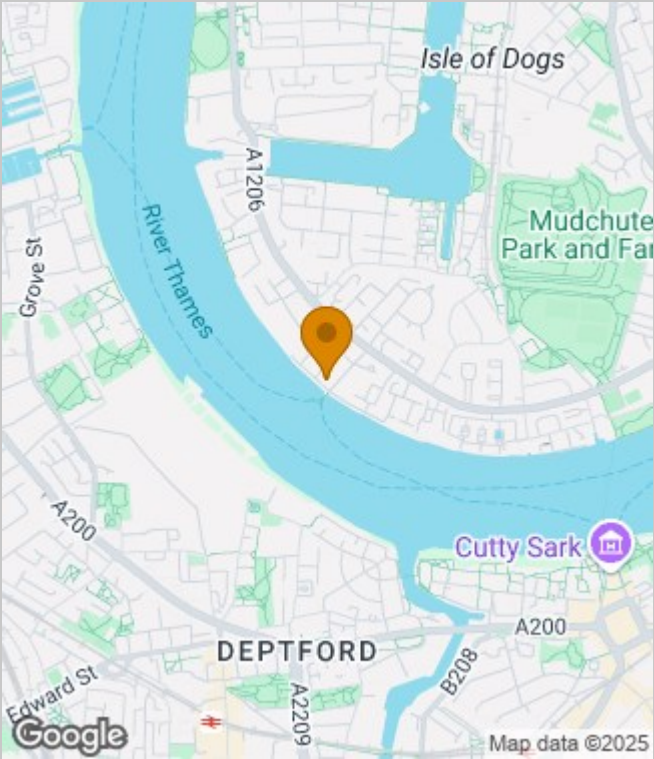
Council Tax Band: D

Available: 31st July 2025

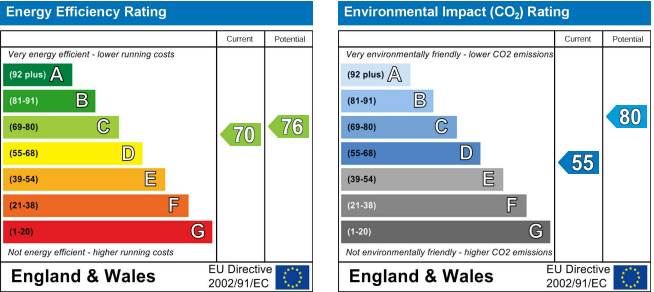




Area Map



Energy Performance Graph



These particulars, whilst believed to be accurate are set out as a general outline only for guidance and do not constitute any part of an offer or contract. Intending purchasers should not rely on them as statements of representation of fact, but must satisfy themselves by inspection or otherwise as to their accuracy. No person in this firms employment has the authority to make or give any representation or warranty in respect of the property.

Franklyn
James

60 Westferry Road, London, E14 8JE
Tel: 02070056080 Email: lettings@franklynjames.co.uk <https://www.franklynjames.co.uk>